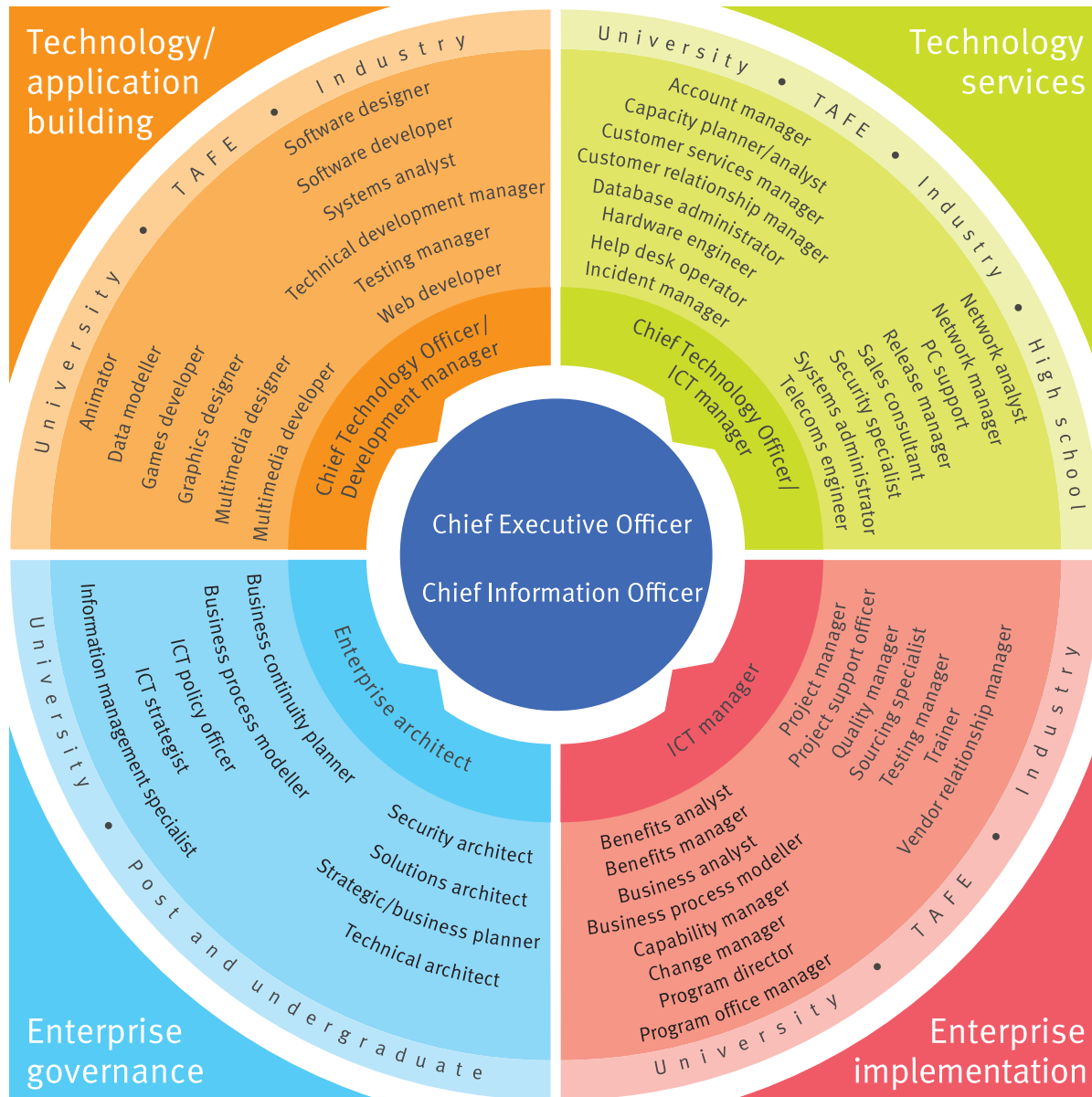


ICT Career Streams



The ICT career streams diagram highlights the key roles available in an ICT career, so informed decisions can be made when considering study and career options and pathways.

Streams

Technology/application builders are responsible for all aspects of building ICT systems, applications and technologies.

Technology services covers all areas of the delivery of ICT services to users, from helpdesk to network management, systems administration to account management.

Enterprise implementation covers aspects of ICT that relate to changes to the management or operation of the enterprise.

Enterprise governance includes all aspects of policy and strategy including strategic information management and enterprise architecture.

The diagram:

- identifies entry points from high school, industry, TAFE and university
- includes a variety of roles depending on qualifications and experience
- lists roles alphabetically—it is not necessary to work through each role to progress.

Suggested use

The diagram can assist in:

- considering study options
- considering career pathways and training requirements.

For more information, visit www.qgcio.qld.gov.au